



Summary of Parents' Circular No. P077/15

5 November, 2015

Dear Parents,

This is a summary of the Parents' Circulars issued every Thursday. For details, please refer to the Chinese version. If you have any enquiries, please feel free to contact the class teacher.

1. Term 1 Assessment

- 1.1. **Term 1 Assessment** is scheduled on **Thursday, 12 November to Tuesday, 17 November**. Please note the followings:
- (A) During the assessment period, there will be no afternoon school. **The school begins at 8:20am as usual, but finishes early at 11:45am.** No lunch service will be provided, but school bus service will continue with the time of returning home shifted earlier. Please contact the school bus driver for the exact returning time on those 4 days.
- (B) During the assessment period, if there is any abnormal weather condition or any accident leading to a school closure, the whole assessment timetable will be postponed to the next school day in its original order.
- 1.2. The assessment timetable and the areas to be assessed in each subject are distributed for your reference. Subjects not listed in the assessment timetable such as Visual Arts, Music, Physical Education, etc. will be assessed during normal school lessons.
- 1.3. **All P6 students** have to note that **their results of this assessment**, together with Term 3 assessment in their P5, Term 1 and Term 2 assessment in their P6 **are used for allocating their bands for Secondary School Place Allocation (SSPA).** **No make-up assessment will be arranged for absentees.** Sick leave will not be punished, and the school will apply to EDB for exemption of this assessment in the SSPA process on production of a doctor's certificate.
- 1.4. During the assessment period, all after school activities will be suspended. **Normal school activities will resume on Wednesday, 18 November.** School hours and lunch service will be as usual, too.
- 1.5. Term 2 starts on Tuesday, 1 December.

2. Special arrangement on Wednesday, 11 November

In order to give students sufficient time for revisions, **there will be no afternoon school on Wednesday, 11 November. The school begins at 8:20am as usual, but finishes early at 11:45am.** No lunch service will be provided, but school bus service will continue with the time of returning home shifted earlier. Please contact the school bus driver for the exact returning time on that day.

3. Arrangements for distribution of Assessment Papers

- 3.1. The arrangement for distribution of assessment papers are as follows:

P.1-P.4	All assessment papers will be distributed to students
P.5-P.6	All assessment papers will only be discussed and corrected at school and they will not be distributed to students

- 3.2. P.5 and P.6 parents who have any questions about the assessment papers should contact the class teachers by phone **before Wednesday, 2 December.**

4. The completion of After-School Programme (phase I)

- 4.1. From **Tuesday, 10 November**, homework classes and Chinese Learning Programme for Non-Chinese

Speaking Students will be completed.

- 4.2. The phase (II) programme will start from **Monday, 30 November 2015**. Parents should note that before the Phase(II) programme starts, school ends at 3:30 pm as usual.

5. Secondary School Places Allocation (SSPA) Information Leaflets and VCDs (P6)

- 5.1. The SSPA Information Leaflets and VCDs are distributed to all P6 students today (5 November, 2015). Parents may also visit the Education Bureau homepage (www.edb.gov.hk) (Select: Home>Kindergarten, Primary and Secondary Education>Education System>School Places Allocation Systems>Secondary School Place Allocation) to browse or download further information.
- 5.2. The period of application for Secondary 1 (S1) discretionary places (DP) is from 4 January to 20 January 2016. Each P6 student may apply to not more than two secondary schools participating in the SSPA System for DP, be it a government, aided, caput or DSS school. The Application Form for S1 Discretionary Place together with the Notes for Parents and the Primary 6 Student Record Form will be distributed to parents in early December 2015.
- 5.3. Apart from applying two participating secondary schools for DP, students may also apply to non-participating DSS schools for S1 places, and there is no limit to the number of non-participating DSS schools they can apply to. Parents may visit EDB's Homepage to download the List of Direct Subsidy Scheme Schools Not Participating in Secondary School Places Allocation 2014/2016.
- 5.4. A P.6 Parents' Meeting on the introduction of the application for S1 discretionary places will be held on **Saturday, 12 December**. Details will be announced later.

6. Change to winter uniforms

- 6.1. From today onwards, students may choose to wear summer or winter uniforms according to the weather conditions. They may also put on a cardigan of plain grey or white. The date for the whole school to change to winter uniforms is **Monday, 30 November 2015**.

7. Collection of Winter School Uniform

- 7.1. Winter Uniforms will be available on **Saturday, 7 November**. Parents and students should bring their **preorder receipt and the exact fee** to collect the uniforms at the specific time stated below.
- 7.2. Due to the weight of the uniform and the possibility of losing the fee, **parents are suggested to collect the uniforms by themselves**.
- 7.3. Please note the following arrangements:

Date	Saturday, 7 November
Time	From 9:00am- 12:00pm
Venue	School Library on the ground floor
Remarks	1. Parents and students should bring their preorder receipt and the exact fee to collect the uniforms. 2. If students or parents cannot come on that day, they have to approach the uniform supplier themselves to collect the uniforms. Wah Sang Knitting & Garments Factory Address : Rm.6, M/F, Ping Fai Industrial Building, 312 Un Chau Street, Cheung Sha Wan, Kowloon. Tel. : 23872537 / 27286562 / 23870284 3. Parents have to approach the uniform supplier themselves in case there is any problem about the uniforms.

8. E-Class Login ID and Password

In order to enhance the communication between the school and parents, as well as to tie in with the electronic learning environment, our school has started using E-Class which is a well-developed platform offering school a

comprehensive range of systems to increase efficiency in teaching and administration.

Details are as follows:

- i. Parents can go to the website (<http://eclass.gcewps.edu.hk>) and key in the “Login ID” and “Password” to connect to the E-Class Intranet System.
- ii. The School has already uploaded some worksheets to the E-Class for the purpose of revision. Details are as follows:

A. Please visit website <http://eclass.gcewps.edu.hk> and choose English version.



B. Login and then choose Learning Centre.



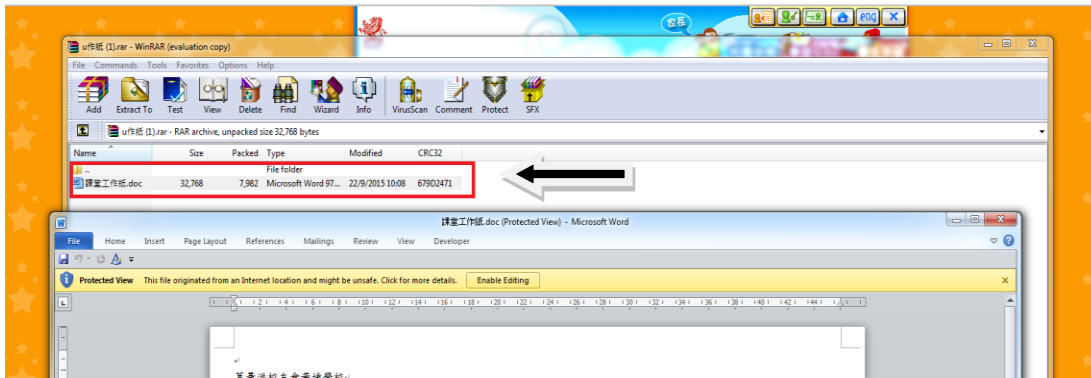
C. Choose Subject Area.



D. Select a suitable subject.



E. Choose and Download Suitable WinRAR File.



F. If there is no Winrar software in your computer, please download at <http://www.winrar.com.cn/download.htm>.



Remarks:

- Friday, 6 November : Kowloon East Games Day.
- Saturday, 7 November : PTA Annual General Meeting
- Parents please note that the following Interest Classes will be suspended on Saturday, 7 November, 14 November and 21 November. (Football, Fancy Rope Skipping, Table-tennis, Badminton, Basketball, Chinese Painting, Go Chess, Taekwondo, Ukulele, GCE Orchestra, Gardening Team, Therapeutic Horticulture, Chinese Learning and Sign Language Programme)
The above interest classes will be resumed on 28 November.

