



葛量洪校友會黃埔學校
Grantham College of Education Past Students' Association Whampoa Primary School

Summary of Parents' Circular No. P146/15

25 February, 2016

Dear Parents,

This is a summary of the Parents' Circulars issued every Thursday. For details, please refer to the Chinese version. If you have any enquiries, please feel free to contact the class teacher.

1. Term 2 Assessment (7 -11 March)

- 1.1. Term 2 Assessment is scheduled on **Monday, 7 March to Friday, 11 March**. Please note the following:
 - (a) During the assessment period, there will be **no afternoon school**. The school begins at 8:20am as usual, but **finishes early at 11:45am**. No lunch service will be provided, but school bus service will continue with the time of returning home shifted earlier. Please contact the school bus driver for the exact return time on those 4 days.
 - (b) During the assessment period, if there is any abnormal weather condition or any accident leading to a school closure, the whole assessment timetable will be postponed to the next school day in its original order.
- 1.2. During the assessment period, all interest group activities will be suspended. **Normal school activities will resume on Monday, 14 March**. School hours and lunch service will resume, too.
- 1.3. **All P6 students** have to note that **their results of this assessment**, together with Term 3 assessment in their P5 and Term 1 assessment in their P6 **are used for allocating their bands for Secondary School Place Allocation**. **No make-up assessment will be arranged for absentees**. Sick leave will not be punished, and the school will apply to EDB for exemption of this assessment in the SSPA process on production of a doctor's certificate.
- 1.4. Term 3 starts on **Tuesday, 5 April**.

2. Teacher's Professional Development Day

Teachers' Professional Development Day is scheduled on **Wednesday, 9 March**. Students are NOT required to come to school on that day, while all teachers have to attend workshops.

3. Arrangements for distribution of Assessment Papers

- 3.1. The arrangement for distribution of assessment papers are as follows:

P1-P4	All assessment papers will be distributed to students
P5-P6	All assessment papers will only be discussed and corrected at school and they will not be distributed to students

- 3.2. P5 and P6 parents who have any questions about the assessment papers should approach the class teachers **before Wednesday, 23 March**.

4. The completion of After-School Programme (phase II)

- 1.1. From **Friday, 4 March**, homework classes and Chinese Learning Programme for Non-Chinese Speaking Students will be completed.
- 1.2. The phase (III) programme will start from **Tuesday 5 April, 2016**. Parents should note that before the Phase(III) programme starts, school ends as usual 3:30 pm.

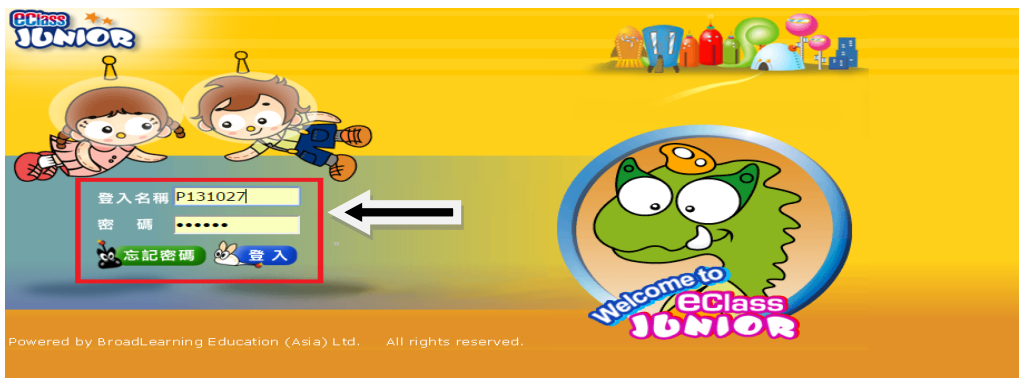
5. E-Class Login ID and Password

In order to enhance the communication between the school and parents, as well as to tie in with the electronic learning environment, our school has started using E-Class which is a well-developed platform offering school a comprehensive range of systems to increase efficiency in teaching and administration.

Details are as follows:

- i. Parents can go to the website (<http://eclass.gcewps.edu.hk>) and key in the “Login ID” and “Password” to connect to the E-Class Intranet System.
- ii. The School has already uploaded some worksheets to the E-Class for the purpose of revision.
Details are as follows:

A. Please visit website <http://eclass.gcewps.edu.hk> and choose English version.



B. Login and then choose Learning Centre.



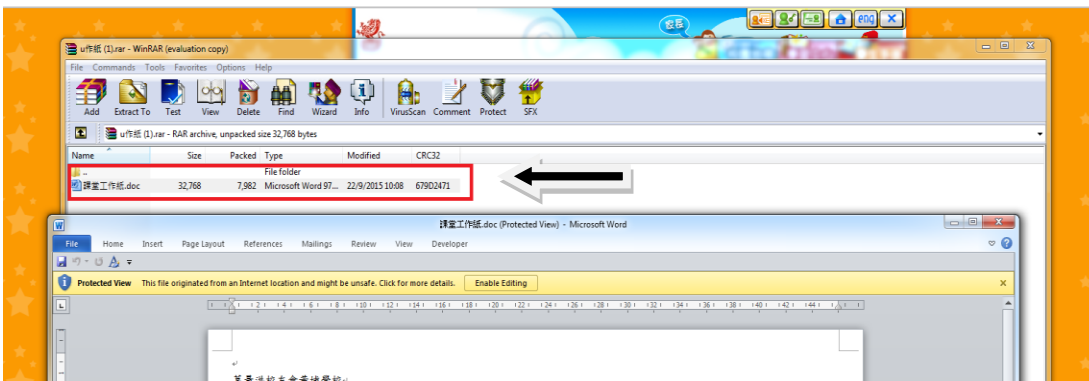
C. Choose Subject Area.



D. Select a suitable subject.



E. Choose and Download Suitable WinRAR File.



F. If there is no Winrar software in your computer, please download at <http://www.winrar.com.cn/download.htm>.



Lee Yiu Po
Principal